

Daniel Preece

Selected Paintings 04-08

07949 593 502

daniel@danielpreece.co.uk

www.danielpreece.co.uk

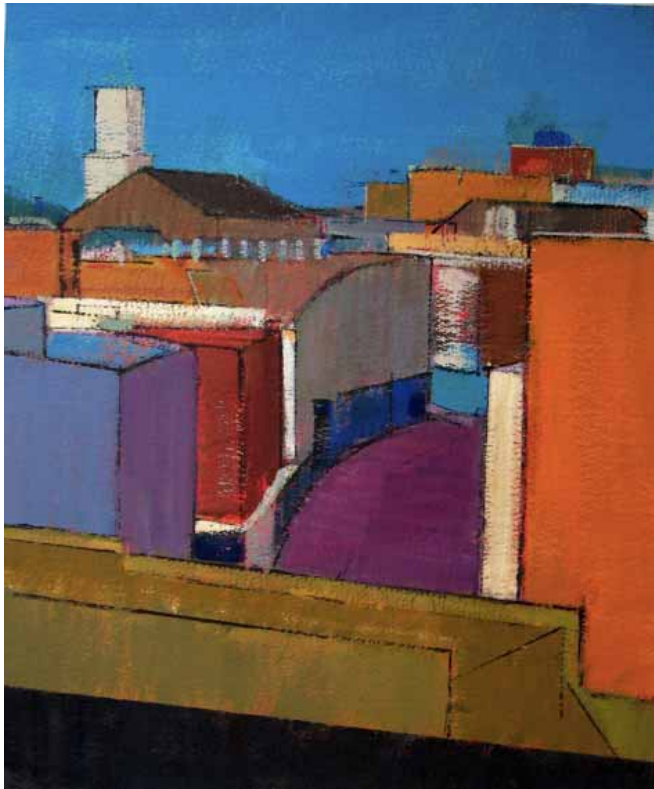


























































List of works

page no.

1	Red Road	2006, Oil on Canvas	182cm 165cm
2	Panorama	2006, Oil on Canvas	112cm x 310cm
3	Panorama 2	2006 Oil on Canvas	121 cm x 244cm
4	Curve	2006 Oil on Canvas	121cm x 175cm
5	Yellow Sky	2006 Oil on Canvas	96 cm x 190cm
6	Shoreditch High Street	2008 Acrylic on Paper	56cm x 46cm
7	Road	2008 Acrylic on Canvas	121cm x 152cm
8	From Trelick Tower 1	2006 Acrylic on Paper	34cm x 60cm
9	From Trelick Tower 2	2006 Acrylic on Paper	34cm x 60cm
10	From Trelick Tower 3	2006 Acrylic on Paper	60cm x 34cm
11	From Trelick Tower 4	2006 Acrylic on Paper	60cm x 34cm
12	Waterloo Sunset	2006 Oil on Canvas	91cm x 102cm
13	Waterloo	2005 Oil on Canvas	35cm x 110cm
14	Byng Place	2008 Acrylic on Paper	25cm x 32cm
15	W	2008 Oil on Canvas	26cm x 22cm
16	Gasometer and Petrol Station	2008 Oil on Canvas	46cm x 61cm
17	Gasometer at Battersea Park	2008 Oil on Canvas	61cm x 46cm
18	Three Windows	2006 Oil on Canvas	110cm x 240cm
19	Drop and Carry	2006 Acrylic on Canvas	165cm x 182cm
20	Fish Eye	2006 Oil on Canvas	40cm x 134cm
21	Window	2006 Oil on canvas	76cm x 91cm
22	270 Degrees	2006 Oil on Canvas	34cm x 310cm
23	New York from East 66 Street	2007 Oil on Canvas	42cm x 106cm
24	Hudson River	2007 Oil on Canvas	36cm x 90cm
25	Manhattan	2007 Oil on Canvas	85cm x 120cm
26	Gasometer (Battersea)	2008 Acrylic on paper	29cm x 26cm
27	Gasometer (Rotherhithe)	2008 Acrylic on paper	25cm x 28cm
28	Gasometer (Wandsworth)	2008 Acrylic on paper	26cm x 28cm
29	Gasometer (Hackney)	2008 Acrylic on paper	26cm x 28cm

Daniel Preece

Born 1970

Lives and works in London

EDUCATION

2006-07	Prince's Drawing School, London E1	Post Graduate Drawing Year
1989-93	Slade School of Fine Art, London, WC1	BA (Hons) Fine Art
1988-89	Chelsea School of Art, London, SW7	Foundation Course

AWARDS AND RESIDENCIES

2001	Runner up - Laing Landscape and Seascape Award
1997	Second Prize - Gilchrist Fischer Memorial Award
1995	Boise Scholarship to travel and make work in America
1994	Stoves Award Winner
1994	Finalist - Gilchrist Fischer Memorial Award
1993	Henry Tonks Medal for Painting
1992	Slade Project Award to make paintings in North Wales
1991	Second Prize Slade Summer Competition
1990	William Coldstream Prize: Slade School of Fine Art

SOLO EXHIBITIONS

2008	Solo Show Gillions Art, Battersea, London
2006	Solo Show, Slade Summer School, University College London
1999	Fox Williams, Solicitors, London
1998	Solo Show, Slade Gallery, University College London
1994	Solo Show, Slade Summer School, University College London

SELECTED GROUP EXHIBITIONS

- 2008 Mauger Gallery, Bath
- 2006 'Altitude' John Martin at Ashursts, London
- 2006 Small is Beautiful, Flowers Central, Cork Street
- 2005 Hunting Prize Exhibition, Royal College of Art
- 2004 'Subjective' Sarah Myerscough Fine Art
- 2004 C.A.S Artfutures, City of London School
- 2003 'Recent Acquisitions Show', Unilever Building, London
- 2002 'Five New Artists', Purdy Hicks Gallery, Bankside, London
- 2001 'Urban Rhythms', Sarah Myerscough Fine Art, London
- 2001 Laing Landscape and Seascape Award, Mall Galleries, London
- 1998 Group Show as part of the Gilchrist Fischer Memorial Award, Cadogan Contemporary,

PROFESSIONAL EXPERIENCE

- 2006 Elected to the London Group
- 2005 Commissioned to make a number of drawings for Ian Rowland's book on Drawing
- 2004 Commission for the offices of Topland Group
- 2003 Commission to make a painting of Stoke Court for Bayer plc
- 2002 Commission for the Canary Wharf Group
- 2000 Commission to make portrait of up coming actor Tom Hardy
- 1998 Artist in Residence, Slade Summer School
- 1992 Commissioned to make drawings for Ron Bowens Book 'Drawing Masterclass'

COLLECTIONS

Works in the collections of Bayer plc, Topland Group, Canary Wharf Group plc, Unilever plc, University College London, Peat Marwick Accountants, GMO Woolley, Steven Drake Solicitors, Prentis, Donegan and Partners and Stoves, Liverpool. Work also held in private collections across Britain, America, France, Australia, and Hong Kong.

BIBLIOGRAPHY

February 05 Drawing the City, article for *Ian Rowlands*
April 04 Review in the *Saturday Independent*
05/04/01 'Sense of Place', *Artist and Illustrator*
20/01/98 Review by Andrew Taylor, *The Independent*
19/01/98 Review by John McEwen, *The Sunday Telegraph*
July 1994 Drawings reproduced in *Artist and Illustrator*
Jan 1994 Painting reproduced in *Homes and Gardens*
10/1/94 Review by John McEwen, *The Sunday Telegraph*
15/01/94 Review by William Packer, *The Financial Times*
10/12/93 Review by David Hammond, *Huddersfield Daily Examiner*

CONTACT

Daniel Preece
07949 593 502
daniel@danielpreece.co.uk
www.danielpreece.co.uk